

WASH 4WORK

16 MARCH 2022

Engagement Webinar for WASH Pledge Signatories & New Members



Agenda

WASH 4WORK

Welcome and Introduction to WASH4Work (5 min)

Implementing the WASH Pledge (10 min)

Case study - Xylem (10 min)

Engagement with WASH4Work (20 min)

Q&A session (10 min)

Summary and Conclusions (5 min)

WASH
4WORK

About WASH4Work

WASH 4WORK

Who are the WASH4Work Coalition Partners?

- **34 multi-stakeholder partners** collaborating to elevate private sector leadership on WASH
- **22 business leaders** demonstrating best practice on WASH in the workplace, value chains & communities
- **12 global WASH expert organizations**
- **WASH4Work Secretariat** hosted by the UN Global Compact's CEO Water Mandate Initiative
- **WASH4Work Chairs:** WaterAid & Diageo
- **WASH4Work Steering Group:** CWM, Coca-Cola, Diageo, GAP, TBC, UNICEF, Unilever, WaterAid, Xylem

ABInBev

Abercrombie
& Fitch



BHP

Braskem



THE
Coca-Cola
COMPANY



DIAGEO

Gap Inc.

GLOBAL
CITIZEN



LEVI STRAUSS & CO.



TOILET
BOARD COALITION





ABOUT WASH4Work: Our Vision

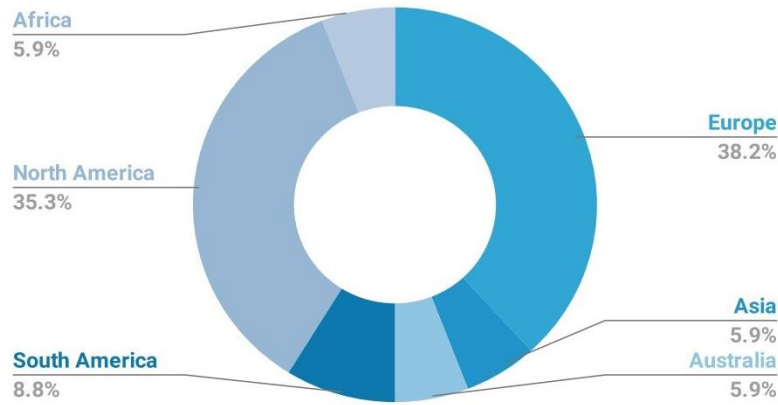
WASH4Work is a multi-stakeholder initiative launched, 2016 to mobilise business action on water, sanitation and hygiene (WASH) in workplace operations, in communities where companies operate, and across supply chains.

WASH4Work aims to:

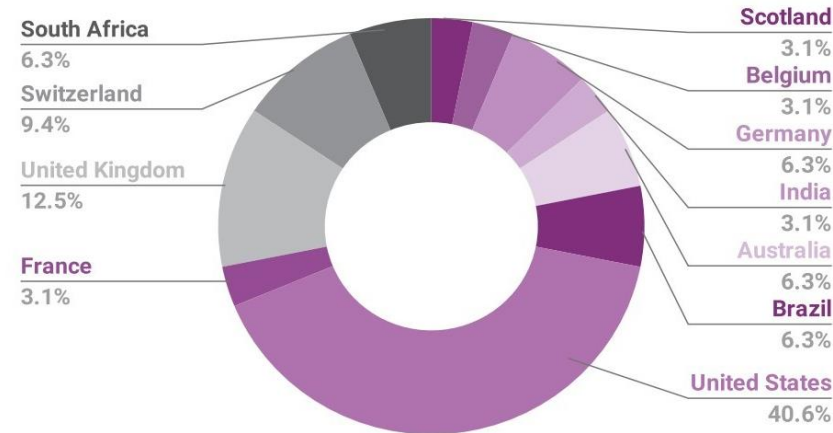
- Demonstrate business leadership on WASH in the workplace
- Share knowledge, leading practice and advocate best-in-class standards
- Continuously evolve the business case for prioritising WASH in corporate water stewardship
- Connect members to scale up WASH impact
- Build consensus and support the implementation of resilient WASH actions

Growth in Business Actions on WASH – Prioritized in Corporate Water Stewardship

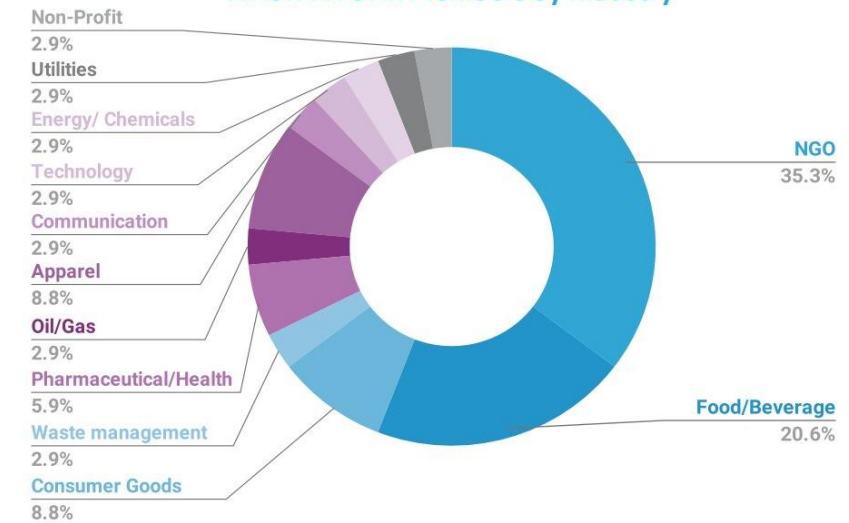
WASH4WORK Members by Continent



WASH4WORK Members by Country



WASH4WORK Members by Industry



Most significant growth in business action across new geographies, industries and across supply chains to small and medium sized enterprises

Insights 2020-2021

SECTION 1.

The Business Case For Investing In WASH As A Corporate Water Stewardship Priority

SECTION 2.

Best Practice—How Companies Are Taking Action On WASH

SECTION 3.

Raising Our Ambition To WASH Resilience



Raising Our Ambition To WASH Resilience

UNLOCKING THE CO-BENEFITS OF
WATER, SANITATION AND HYGIENE
IN CORPORATE WATER STEWARDSHIP

INSIGHTSPAPER, DECEMBER 2021

**WASH
4WORK**

THE WASH ENGAGEMENT JOURNEY IN CORPORATE WATER STEWARDSHIP



BEST PRACTICE:

HOW COMPANIES ARE TAKING ACTION ON WASH



Implementing the WASH Pledge

About the WASH Pledge

WASH Pledge commitment:

By signing the Pledge, companies commit to:

- Implementing access to safe water, sanitation and hygiene at the workplace at an appropriate level of standard for all their employees in **all premises under direct company control and**
- **Supporting partners across our value chains and communities that surround our workplaces** within a time-frame of 3 years

The Pledge adheres to access to WASH as per WHO standards and international best practices.

2 versions of Pledge:

- WASH Pledge 1.0 focused on WASH @ workplace
- WASH Pledge 2.0 focuses on WASH @ workplace, value chain and communities

How do I implement the WASH Pledge?



How do I get started? Step 1

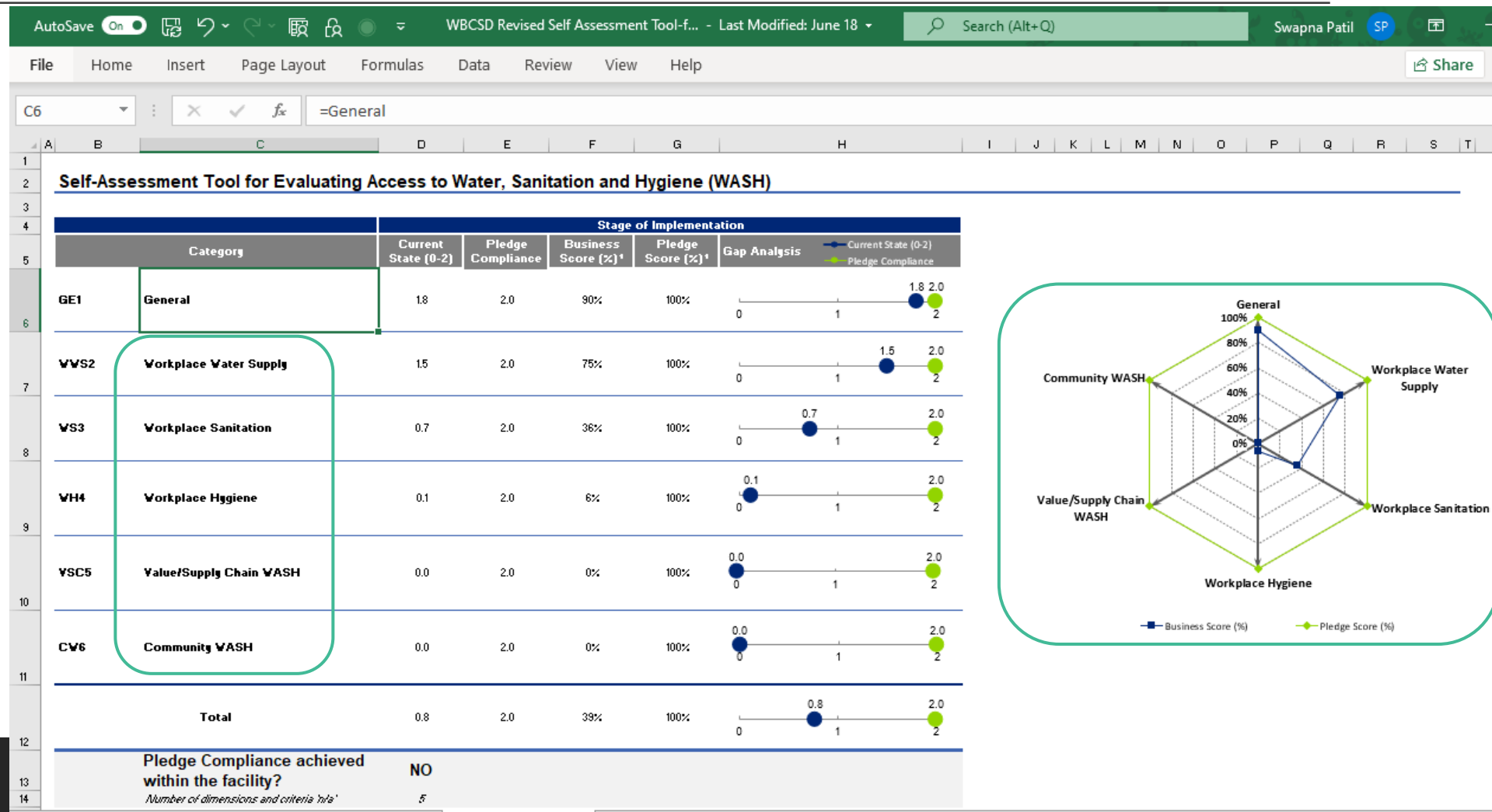
- **Establish a baseline of understanding of current WASH situation for your company**
 - Understand global and local standards, leading practice, laws/regulations for WASH access
 - Understand the current situation of WASH access across operations, supply chains and communities where you operate – via enterprise wide audit
 - Identify hot spots for action

WASH Pledge self-assessment tool

Step 2: Perform a self-assessment audit for your company

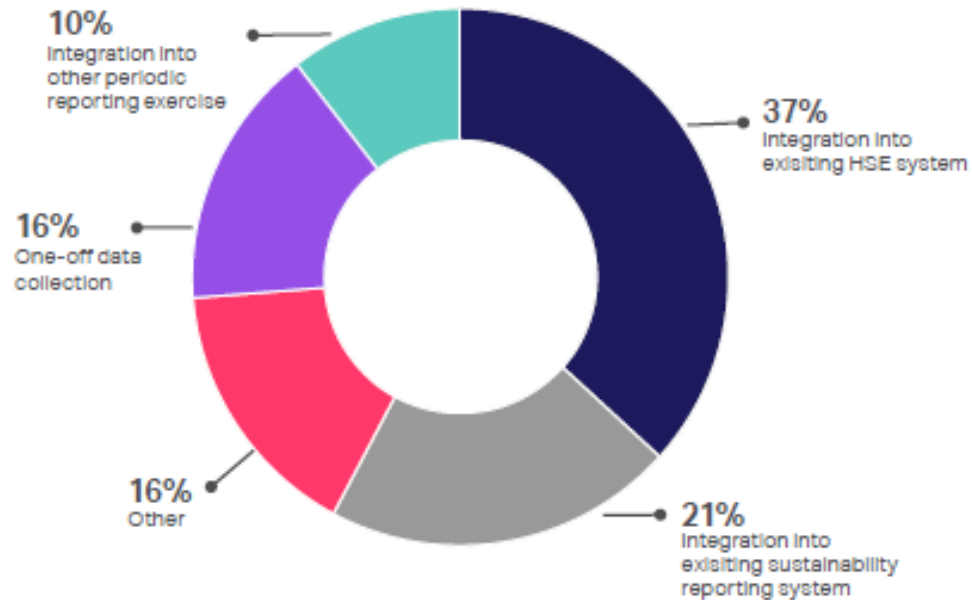
Step 3: Identify hot spots for action / prioritize gaps

- Tool to assess **status of WASH**
- Rationale for scoring and identification of **gaps and recommendations**



WASH Pledge Implementation & Improvement

Step 4: Develop and implement an improvement plan



How WASH Pledge is being implemented

Various initiatives for managing the implementation

- **Training** for cleaning personnel, **awareness raising** activities for employees, or “fine-tuning” of systems and review mechanisms
- Link WASH to **KPI** of plant performance/ **sustainability frameworks**.
- Innovating through water saving **technologies**, treatment options, **monitoring and reporting mechanisms**.
- Integrated action plans in a **web-based software**
- Extended the coverage of Pledge to **contractual employees**/ Some plan to extend to their **supply chains and partners**.

WASH Pledge impact report

Step 5: Disclose and Communicate WASH improvement actions & achievements



- First Impact Report launched at the United Nations High Level Political Forum, July 2018, by WBCSD
- **Second Impact Report to be compiled in 2022 by WASH4Work**
- Status of implementation and impact achieved by signatory companies
- WASH Pledge as a tangible way for business contribution to SDG 6 and the Human Right to Water and Sanitation
- Business case to sign the Pledge and call to action

“The WASH at the workplace Pledge supports companies to take meaningful steps to addressing WASH within their own operations. I encourage more companies to sign up, begin implementing and start reaping the rewards.”
-Paul Simpson, CEO, CDP has given the foreword for this report.



Case study – WASH Pledge implementation at Xylem

WASH Pledge in Xylem's Supply Chain

ANDREA MONTUORI – XYLEM GLOBAL PROCUREMENT SUSTAINABILITY MANAGER

WASH Pledge in Xylem 2025 Sustainability Framework



- The WASH Pledge initiative has been embedded in our 2025 Sustainability Framework and Startegy, guiding our efforts on more than one of Xylem's Signature Goals

WASH FOR OUR EMPLOYEES



Ensure 100 percent of Xylem employees have access to clean water and safe sanitation at work, at home and during natural disasters

WASH ACROSS OUR SUPPLY CHAIN



Require suppliers to take the WASH Pledge for Access to Safe Water, Sanitation and Hygiene at the workplace

WASH IN OUR COMMUNITIES



Providing improved water and sanitation solutions to 20 million people at the base of the economic pyramid

Provide 15 million people with water education to improve quality of life and raise awareness

- Based on company estimated, approximately 90 percent of Xylem revenue addresses SDG 6 – learn more [here](#)



WASH Pledge Across Xylem's Supply Chain

More than 420 Xylem Suppliers have joined the cause since January 2020!

Key Success Factors:

Education Opportunities
for our suppliers

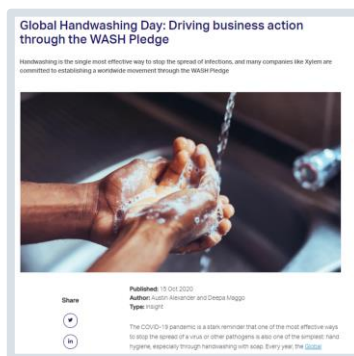
Targets & KPIs to drive
progress

Engagement Opportunities
with Xylem, WBCSD

One-on-One support &
experience sharing

Key Learnings:

- The WASH Pledge is relevant to any industry
- Implementation of the WASH Pledge can vary in process
- Governance & Communication are crucial to avoid double work
- Our best partners will take pride in joining such an initiative



Xylem's leadership has successfully driven business action, bringing their supplier companies together towards a common mission ensuring universal access to WASH.

"We welcome this commitment and are excited to partner with Xylem on the WASH Pledge program. As an ISO 14001-certified contract manufacturer, we are committed to providing innovative solutions around sustainable manufacturing practices. We care deeply about protecting the environment while also improving the health and safety of the working environment for our employees. As part of our pledge, we will continue to improve access to safe water, sanitation, and hygiene within the workplace and engage with our supply base to promote the WASH Pledge," said **Michael Du, CEO of Providence Limited Enterprise**, a supplier to Xylem.

Xylem's initiative is a clear demonstration of how forward-looking businesses can mobilize their network to create momentum at a global scale on an issue of societal importance. Xylem's commitment and actions will yield direct returns to their business by strengthening their operations and supply chains against future shocks like that posed by the current pandemic.



WASH to Empower our Communities

Disaster Response

Deploy humanitarian aid to 200 areas impacted by disaster

Education

Educate 15 Million people about WASH & Value of Water

Base of Pyramid

Provide clean water & sanitation solutions to 20 Million people

Employee Engagement

95% employee participation, 1% of time volunteering

Stakeholder Engagement

100,000 stakeholder participants in Xylem Watermark



Education

- WASH in Schools
- WASH awareness during COVID-19

Base of Pyramid

Providing clean water and sanitation solutions to schools, hospitals & communities

Engagement

Opportunities to educate, raise funds & awareness for water-related causes

*Cumulative impact measured from 2019-2025



Poll question #1

Which best describes what you are trying to achieve through the WASH Pledge implementation?

- To demonstrate our business leadership on WASH & SDGs
- To clearly measure and improve our business performance on WASH
- To ensure best practice to mobilize more businesses to take action on WASH
- To fulfill our commitments to health, safety and well-being of our employees

WASH 4WORK

Poll question#2

Which of these common challenges are you facing in your WASH Pledge implementation?

- How to get started with the WASH Pledge implementation
- Defining what to prioritize and how to collect information/data
- How to work outside the operations, tackling communities and supply chains as well
- How to define geographies to work in, focusing on water stressed regions

WASH
4WORK

Support &
Engagement
Opportunities

WASH TOOLBOX

LEVERAGING MEMBER EXPERTISE

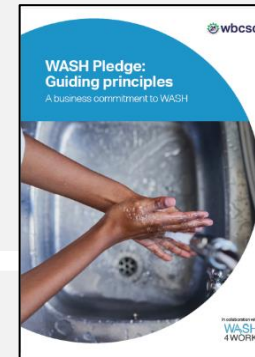
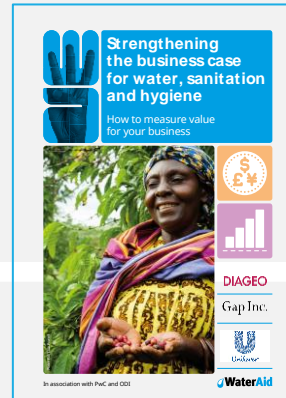
WASH
4WORK

1
Including WASH
In Corporate
Water Stewardship

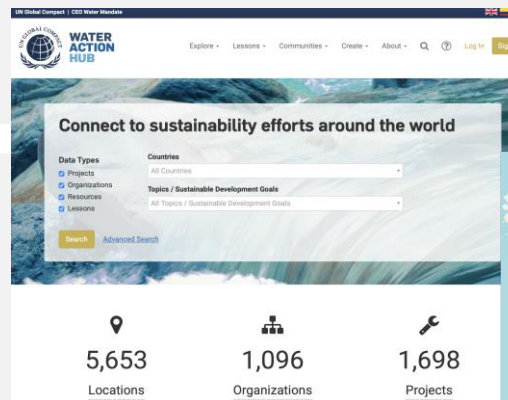
2
Applying
Business Expertise
and Innovation
to WASH

3
Collective Action
on WASH

4
Standards,
Reporting
and Disclosure



WASH Business Case
WASH Pledge
WASH Innovations



Water Action Hub



AWS Standard 2.0 & CDP



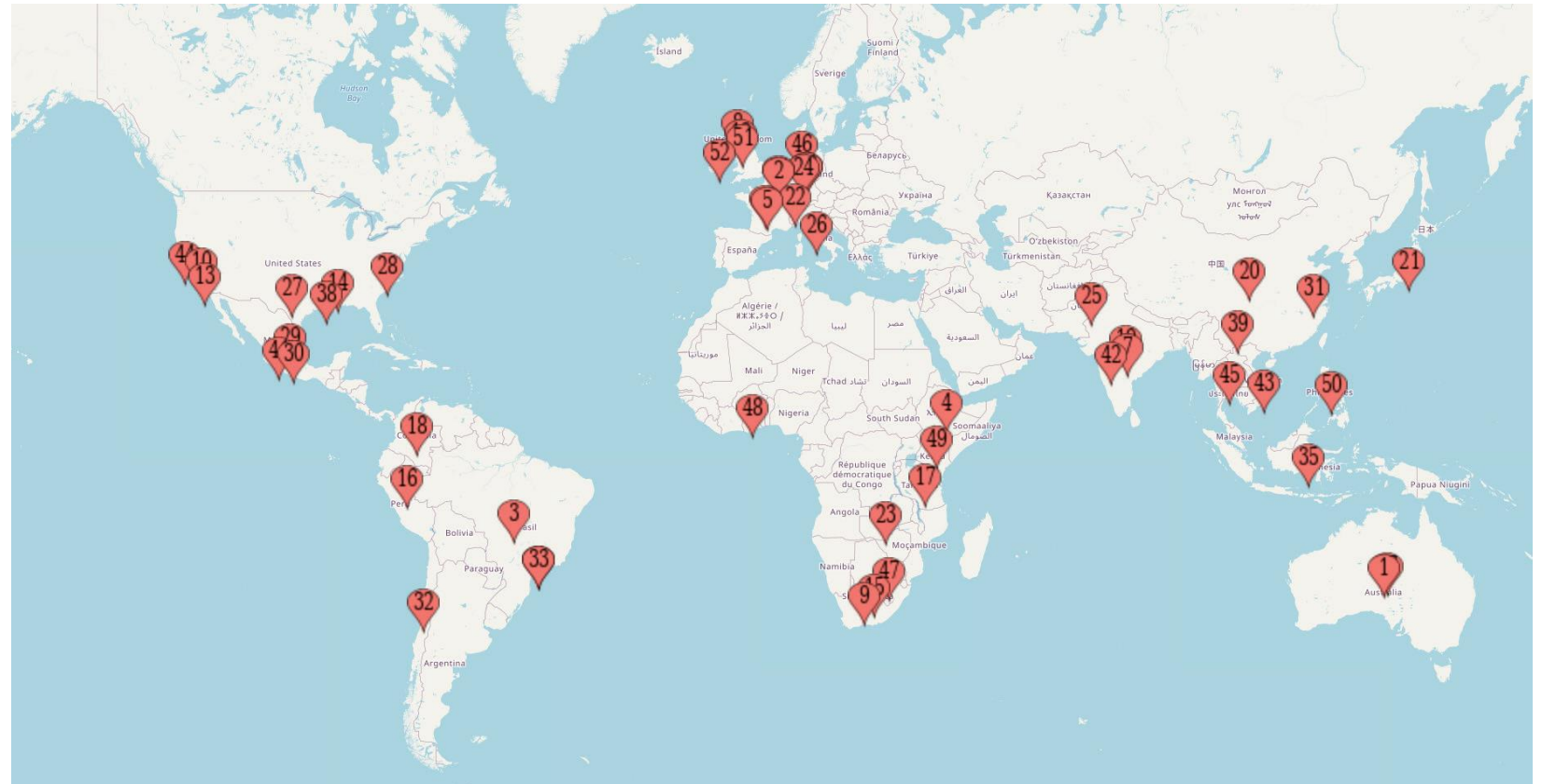
Water Action Hub

WASH
4WORK

Global WASH projects added by companies and stakeholders as seen on the Water Action Hub interactive mapping tool.

<https://wateractionhub.org>

Contact: Leo Rodriguez
Engagement Associate, WASH4Work
lrodriguez@pacinst.org



RAISING OUR AMBITION TO WASH RESILIENCE



**WATER
RESILIENCE
COALITION**



In Partnership: WASH4Work and the Water Resilience Coalition

- Leverage WASH4Work expertise to define and build consensus on Resilient WASH
- Elevate WASH expertise to a broader group of senior business leaders
- Bring WASH expertise to, and directly engage in, Collective Action to build water resilience at scale in water stressed regions



Issue Brief

Water Resilience

Definitions, Characteristics, Relationships to Existing Concepts, and Call to Action for Building a Water Resilient Future

Water is a nexus issue tied to energy, agriculture and food security, industry, human health, biodiversity and ecosystem health, peace and stability, human rights, and many other priorities. Water is also central to meeting the United Nations' Sustainable Development Goals (SDGs) by 2030. However, we face a global water crisis marked by growing competition for freshwater resources, rapidly deteriorating water quality, poor and declining ecosystem health, unprecedented biodiversity loss, and a failure to meet basic water and sanitation needs. This crisis is exacerbated by population growth, unsustainable consumption patterns, and, increasingly, climate change.

The Pacific Institute is globally recognized for its thought leadership on water. This reputation is built upon more than 30 years of water-related research to identify innovative solutions and influence policy and practice for the public and private sectors. Moving forward, the Pacific Institute is significantly scaling its reach and impact to address mounting water challenges.

The Pacific Institute's 2030 goal is to catalyze the transformation to water resilience in the face of climate change.

In this brief, the Pacific Institute presents a working definition of "water resilience." The concept of water resilience has emerged recently in response to growing recognition of a more variable and uncertain future. While climate change is a primary driver of the emerging focus on water resilience, the concept responds to a wide range of environmental, social, economic, and political pressures on water.

The definition of water resilience in this brief informs the Pacific Institute's 2030 organizational goal and related work. Additionally, this definition may also help advance understanding and achievement of water resilience by businesses, governments, NGOs, policymakers, and other water policy and practice actors beyond the Pacific Institute.

DEFINING WATER RESILIENCE

The Pacific Institute defines "water resilience" as the ability of water systems to function so that nature and people, including those on the frontlines and disproportionately impacted, thrive under shocks, stresses, and change.

WASH 4WORK

2022 WORK PROGRAM

- 1. Amplifying Business Leadership**
- 2. Evolving Best Practice & Standards**
- 3. Strengthening the Business Case**
- 4. Connecting Members for Scale**
- 5. Building Consensus on WASH Resilience**

Call for Engagement!

Accelerate Your WASH Pledge Commitments



1. Amplifying Your WASH Actions:

- Share reporting on WASH actions for collective business impact
- Advocate WASH actions via external events & webinars

2. Best Practice & Standards

- Share leading practice for implementing WASH in the workplace
- Work with peers to continuously improve
- Advocate best practice standards

3. Strengthening the Business Case

- Measure direct and indirect business benefits

4. Connecting Members for Scale

- Share WASH projects in the Water Action Hub
- Identify companies & experts to partner with in common geographies

5. Building WASH Resilience

- Participate in W4W dialogues to help define and build consensus on WASH resilience

WASH 4WORK

Poll question#3

Which type of support would be most useful to help your business progress on your WASH journey?

- Establishing a baseline of understanding of current WASH situation for your company
- Performing a self-assessment audit for your company
- Identifying hot spots for action / prioritizing gaps
- Developing and implementing an improvement plan
- Disclosing and Communicating WASH improvement actions & achievements

WASH
4WORK

Q&A session

Call for Engagement!

Accelerate Your WASH Pledge Commitments



1. Amplifying Your WASH Actions:

- Share reporting on WASH actions for collective business impact
- Advocate WASH actions via external events & webinars

2. Best Practice & Standards

- Share leading practice for implementing WASH in the workplace
- Work with peers to continuously improve
- Advocate best practice standards

3. Strengthening the Business Case

- Measure direct and indirect business benefits

4. Connecting Members for Scale

- Share WASH projects in the Water Action Hub
- Identify companies & experts to partner with in common geographies

5. Building WASH Resilience

- Participate in W4W dialogues to help define and build consensus on WASH resilience



wash4work.org



@WASH4Work



/in/wash4work/

WASH 4WORK

Contact: Cheryl Hicks
Senior Advisor, WASH4Work
cheryl-hicks@pacinst.org

ABInBev

Abercrombie
& Fitch



BHP

Braskem



THE
Coca-Cola
COMPANY



DIAGEO

Gap Inc.

GLOBAL
CITIZEN



International
Labour
Organization

LEVI STRAUSS & CO.



TOILET
BOARD COALITION



WSUP | Water & Sanitation
for the Urban Poor

