



CEO
WATER
MANDATE

Forward Faster to
CEO Water Mandate



Agenda

WHO WE ARE

WHAT WE DO

REPORTING
SYSTEMS

NEXT STEPS

Q + A





**FORWARD
FASTER**

UN Global Compact flagship initiative to accelerate action across the SDGs

Sign Up to Targets in Up to 5 Areas



Gender Equality

Climate Action

Living Wage

Water Resilience

Finance & Investment

Forward Faster Water Resilience Target:
Build water resilience across global operations and supply chains and join hands to achieve collective positive water impact in at least 100 vulnerable prioritized water basins by 2030.

- Companies that join the Water Resilience target will automatically join the CEO Water Mandate
- CEO Water Mandate provides programmatic opportunities that support companies achieve the Forward Faster target
- Reporting for Forward Faster will begin in 2025
 - Water Targets & Basins of Interest, see action guide



**CEO
WATER
MANDATE**

**PACIFIC
INSTITUTE**

WHO WE ARE



CEO Water Mandate

A partnership of the UN Global Compact and the Pacific Institute



**CEO
WATER
MANDATE**



**United Nations
Global Compact**

Largest corporate
sustainability platform



**PACIFIC
INSTITUTE**

Water resiliency
thought leadership



**CEO
WATER
MANDATE**

**PACIFIC
INSTITUTE**

Overview of the CEO Water Mandate Programming



**WATER
RESILIENCE
COALITION**



- Leadership Initiative
- Highest Ambition
 - Driving Collective Action

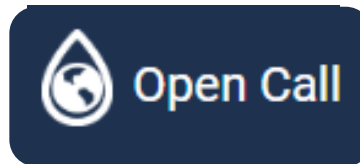


**CEO
WATER
MANDATE**



**WASH
4WORK**

- Majority of Membership
- Access to Resources
 - Transparency



**WASH
4WORK**
WASH PLEDGE

- Ideal for SMEs, Value Chain
- UNGC Mem. not Required
 - Setting Water Targets

WHO WE ARE

A global network of businesses committed to water stewardship



A network of 330+ endorsing companies

Representing \$7+ trillion market capitalization

All sectors, sizes, and geographies



WHO WE ARE

A platform to commit to
continuous progress in six
areas



Six Commitment Areas

1. Direct Operations
2. Supply Chain & Watershed Management
3. Collective Action
4. Public Policy
5. Community Engagement
6. Transparency



**CEO
WATER
MANDATE**

**PACIFIC
INSTITUTE**

WHAT WE DO



WHAT WE DO

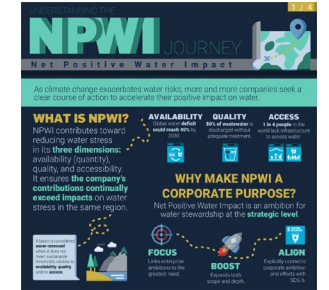
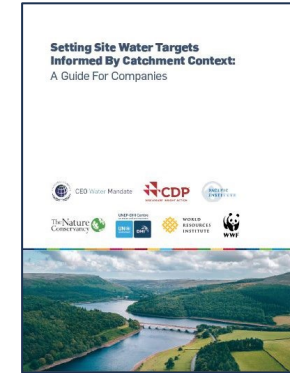
Thought leadership,
resilience scaling,
elevating water's profile



- LEAD -



Academy



- SCALE -



- ELEVATE -



UN
2023 WATER
CONFERENCE

NEW YORK
22-24
MARCH
2023



CEO
WATER
MANDATE



Active Thought Leadership Projects

-

Benefit Accounting for Nature-Based Solutions (NBS)

Building the business case for NBS. Tool + method for identification, forecasting, and valuation of benefits

Water Resilience Assessment Framework (WRAF)

Step-by-step corporate guidance on assessing water resilience from a wholistic basin perspective

Net Positive Water Impact (NPWI)

WRC-led approach to improve and measure basin level health of water quantity, quality, and access (WASH)

WASH Working Groups

WASH4Work groups on standardized accounting, supply chain engagement, and climate resilient WASH

Water Action Hub Tools

Basin-level project mapping, corporate benchmarking, tool navigation, find partners for collective action



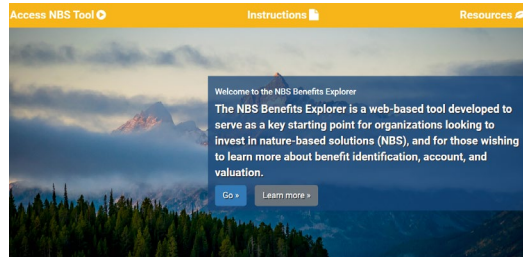
CEO
WATER
MANDATE

PACIFIC
INSTITUTE

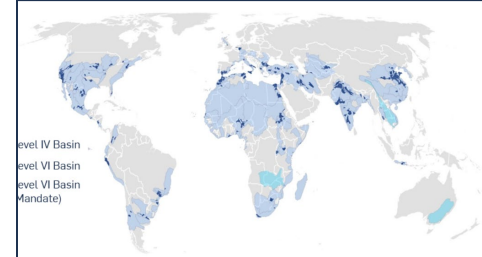
WATER ACTION HUB & DIGITAL TOOL FUTURE

The Premiere Online Destination for Water Stewardship Activities

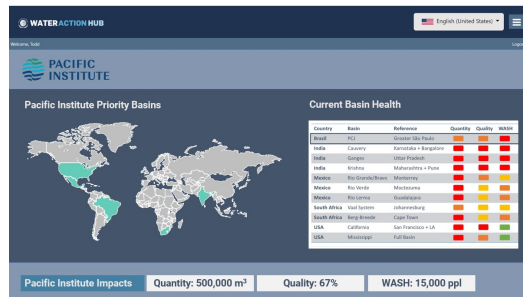
NBS Benefits Explorer



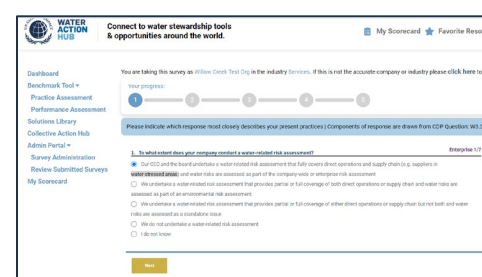
100 Basins App



Basin Monitoring



Benchmark Tool



WASH4Work



Improve WASH:

- in the Workplace
- in Supply Chains
- in Communities

Working Groups

1. [Standardized WASH Benefit Accounting](#)
2. [Climate Resilient WASH](#)
3. [WASH in the Supply Chain](#)



[2022 WASH Insights Report](#)



WHAT WE DO

The WRC is an action-centered commitment platform of the Mandate



**WATER
RESILIENCE
COALITION**



**WATER
RESILIENCE
COALITION**



37 Companies

18 Partners

- **What sets the WRC apart:**
 - Committing to specific, ambitious, long-term goals
 - Leadership and voice on water at the CEO level
 - Leveraging collective action to achieve impact at scale
- **By 2030 the Coalition seeks to:**
 - Have positive water impact in over 100 water stressed basins
 - Equitable and resilient WASH for at least 300 million people
- **By 2050 the Coalition seeks to:**
 - Achieve Net Positive Water Impact in 150 basins



**CEO
WATER
MANDATE**

 **PACIFIC
INSTITUTE**

WHAT WE DO

The WRC has pioneered the NPWI concept as an impact-oriented goal



Net Positive Water Impact



Enterprise ambition for water-stressed basins



Reducing water stress in three dimensions: **availability (quantity), quality, and access.**



Company **contributions exceed impacts** on water stress in the same region.



Quantifiable and measured via both short-term outputs and long-term outcomes.

FORWARD FASTER WATER RESILIENCE TARGETS





**FORWARD
FASTER**



Gender Equality



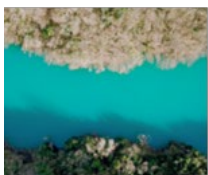
Climate Action



Living Wage



Water Resilience



Finance & Investment

FORWARD FASTER REPORTING TO BEGIN IN 2025

Action Area 4: Water Resilience

- Build water resilience across global operations and supply chains.
- Achieve collective positive water impact in at least 100 vulnerable prioritized water basins by 20230.

KPIs

- Water quantity
- Water quality
- Water Accessibility

Reporting Indicators

1. Corporate Water Targets
2. Water-stressed basin with direct operations
3. 10 highest priority water-stressed basins and action taken
4. Basins outside the 100-priority basin



**CEO
WATER
MANDATE**

**PACIFIC
INSTITUTE**

REPORTING

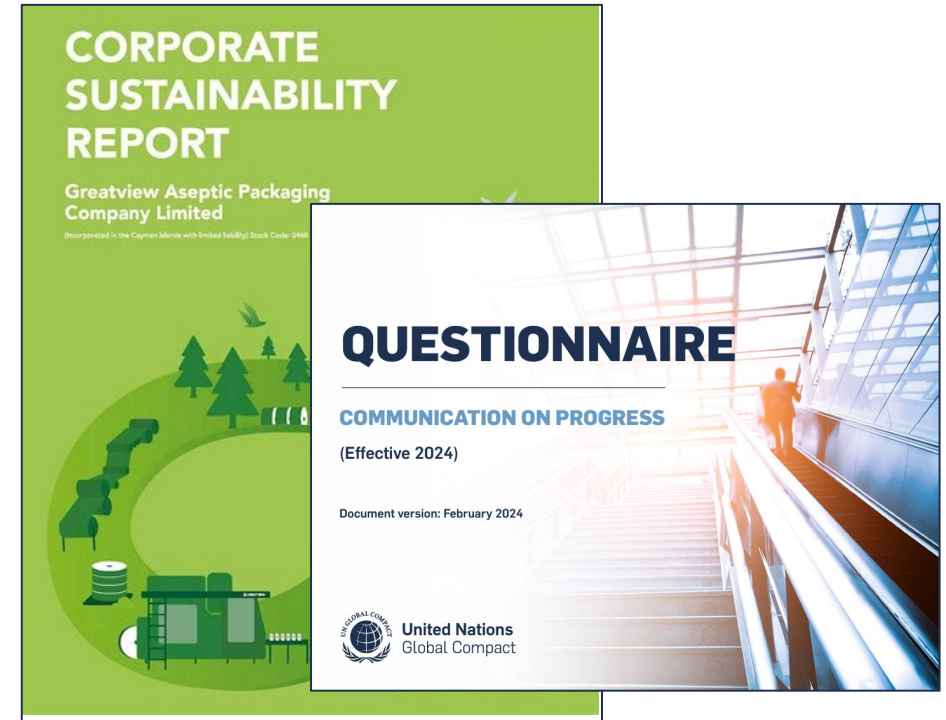
Complete your Global Compact CoP

- In 2024 CEO Water Mandate companies can **fulfill their reporting requirement by completing the Global Compact CoP**
- Questionnaire strongly recommended
- Open 1 April – 31 July

Support collective action mapping

- Facilitate collective action and connect your company to relevant opportunities

2025 ONWARD: FORWARD FASTER REPORTING
WILL SATISFY CEO WATER MANDATE REPORTING
REQUIREMENT



Please enter details of your operations in the selected basin

*Select country

*City

Interested in Engaging Already Engaging

*Investment Status

Comments

Mark as Private on Water Action Hub

WRC Flagship Project





**CEO
WATER
MANDATE**

HOW TO GET
STARTED NOW



SHARING TARGETS & BASINS OF INTEREST

Link in Chat

Link on Website

Navigate to Portal



Register

First Name

Last Name

Email

Password

Confirm Password

Organization

Save And Next

Sign In / Register



Add Water Target Data

*Does your Company have a Water Target?

*What is the Target?

*Target Achievement Year

*Target Applies to Direct Operations?

*Target Applies to Supply Chain?

*Target Applies to Communities?

*Progress towards the target in this reporting year

CoP Reporting Year

Close Save

Input Water Targets



Get notified of opportunities for collective action



Please enter details of your operations in the selected basin

*Select country

*City

Interested in Engaging Already Engaging

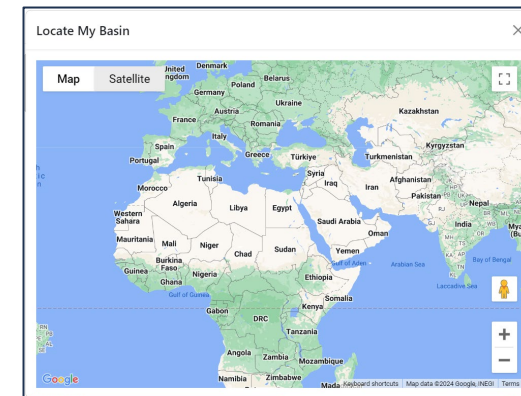
*Investment Status

Comments

Mark as Private on Water Action Hub

WRC Flagship Project

Input Interest & Active Projects



Locate Your Basins



Welcome, Todd



Basin Collective

Pacific Institute

Please click the Add New Basin Data button

---Select a Basin to Filter Projects---

[Reset Filter](#)

Your Priority Basins and Projects

Company

Pacific Institute

Add Basin Data

*Select a basin of interest, or use Locate My Basin to pick from a map

---Please Select Basin---

[Locate My Basin](#)

Please enter details of your operations in the selected basin

*Select country

---Please Select One---

*City

Interested in Engaging

Already Engaging

*Investment Status

---Please Select One---

*Project Focus

---Please Select One---

*Collective Action

---Please Select One---

Partner Name

---Please Select One---

Partner Contact Name

*Project Name

Project Url

Project File (jpeg,pdf,docx,doc,png,jpg)

Choose Files

No file chosen

Comments



Add New Basin Data

Basin Opportunities

Project File

Actions



Edit



CEO WATER MANDATE

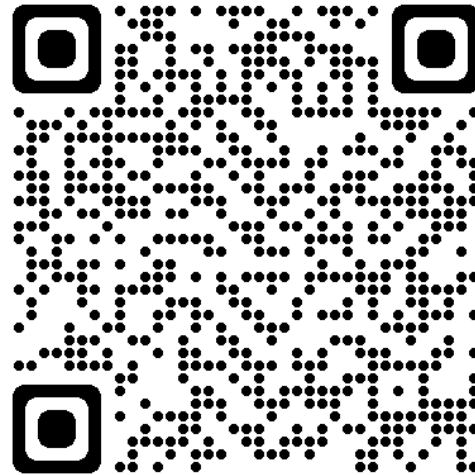


JOIN THE WATER ACTION HUB TODAY



WATER ACTION HUB

1. Sign Up or Login
2. Map Your Water Action



**CEO
WATER
MANDATE**

 **PACIFIC
INSTITUTE**

NEXT STEPS



2024 Member Engagement Opportunities

-
- Get Involved: A 2024 To-do list for new and existing members
- Seeking participants for speaking engagements, piloting initiatives, and ambassador roles.
- Launches planned for 2024
- Member Meetings: CEO Water Mandate, Water Resilience Coalition and WASH4WORK
- *NEW Bi-annual Collective Action Meeting – 1st Event September/October 2024



CEO
WATER
MANDATE

PACIFIC
INSTITUTE

Upcoming Events



World Water Week 2024: 25-29 August	Details
Building Resilient Water Systems: Bridging Borders for Peace	60-minute online session
NPWI: Bridging boundaries in corporate water stewardship	90-minute onsite & online
Perceived and Experiences Barriers to Corporate Engagement in Collective Actions	On-site Workshop
Roundtable and Networking Event	UNGC Country Network
Talking Show on Corporate Water Stewardship	UNGC Country Network



UN General Assembly (UNGA 79): 10–24 September	Details
CEO Circle Meeting	23th Sept.
UNGC Leaders' Summit	24th Sept.
Full day event	25th Sept.



NEXT STEPS

1. Explore the Membership Opportunities page and complete the to-do list
2. Engage with the Water Action Hub + Input basins of interest
3. Let us know if you are attending SIWI or UNGA 2024
4. Consider making a financial contribution to a programmatic area



CEO
WATER
MANDATE

PACIFIC
INSTITUTE

Q+A SESSION





**CEO
WATER
MANDATE**



**PACIFIC
INSTITUTE**

THANK YOU

