



[www.cdp.net](http://www.cdp.net) | @CDP

**Deloitte.**

**NBIM**

Norges Bank Investment Management





# Understanding and assessing the relative maturity of corporate water stewardship practice

CEO Water Mandate Stockholm Multi-Stakeholder Working Session  
September 04 2013

**Cate Lamb**

Head of Water, CDP

cate.lamb@cdp.net | @Cate\_Lamb

**Deloitte.**

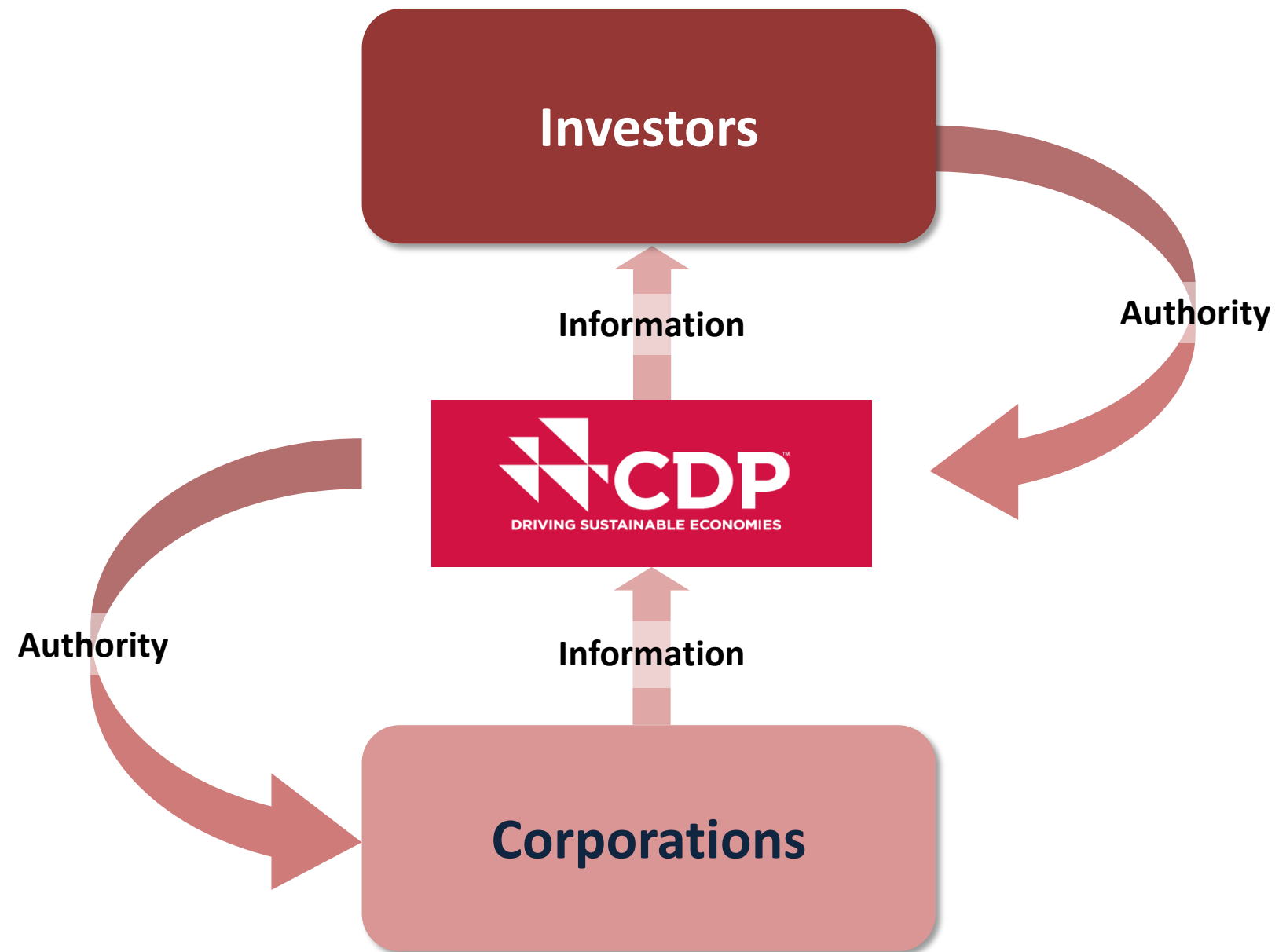
**NBIM**

Norges Bank Investment Management

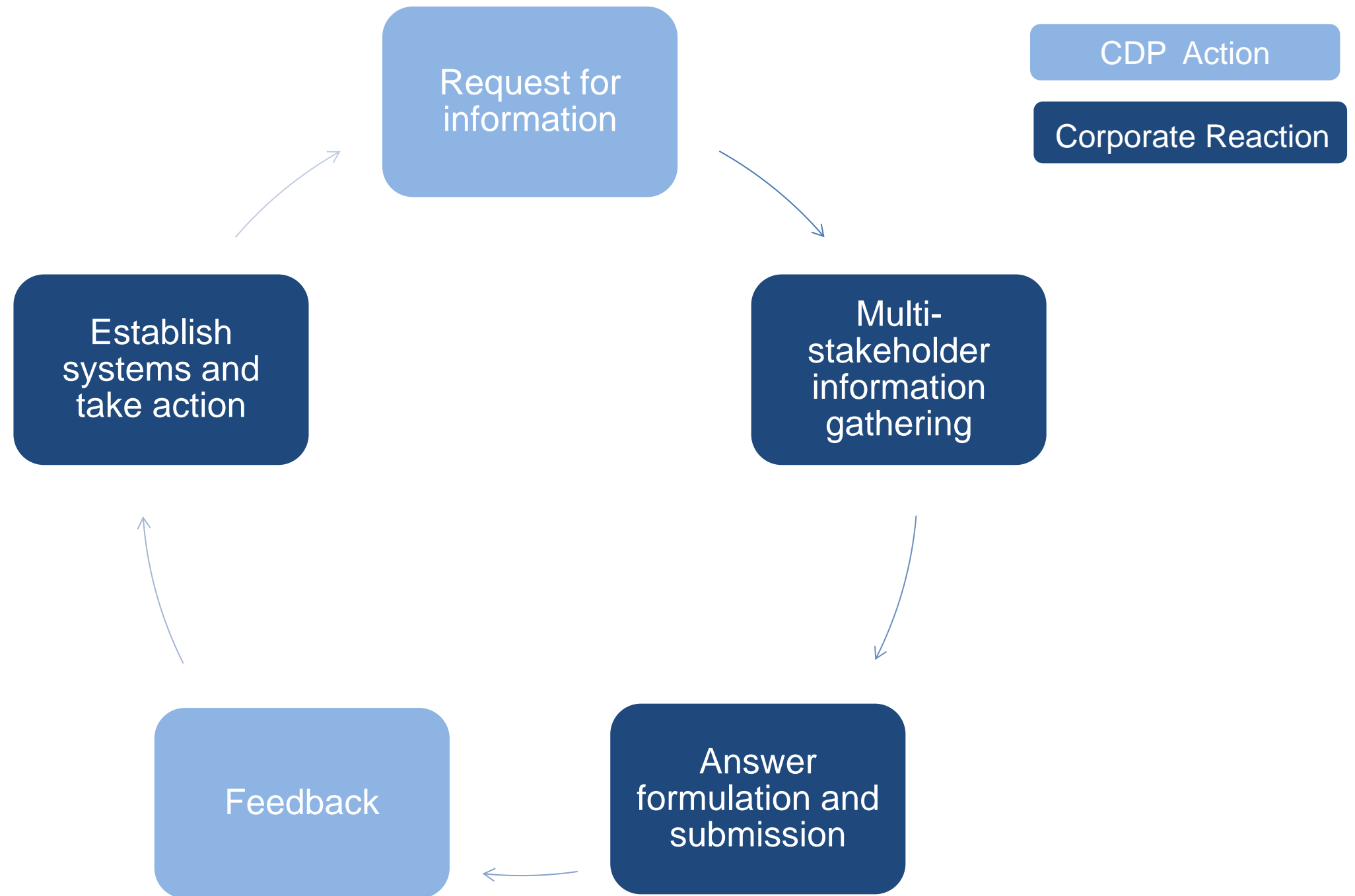
 **CDP**  
DRIVING SUSTAINABLE ECONOMIES



# CDP seeks disclosure on behalf of investors



# The CDP process



# CDP water questionnaire

CDP Water Disclosure 2013 Information Request

## CDP Water Disclosure 2013 Information Request

The following set of questions form the CDP Water Disclosure 2013 information request. Companies are asked to answer these questions in the Online Response System (ORS) provided by CDP through their website. As such, this document is a representation of the request and whilst the questions will remain the same, the format may differ online particularly where drop down options and tables have been included for ease of responses. Guidance will be available from February 2013 which will include or set out all of the options available and provide screen shots of the ORS to aid companies in completing the request.

We request a reply to the following questions by 30 June 2013.

Please respond to the information request using our Online Response System (ORS). This is the same ORS as is used for the Investor CDP 2013 information request (on carbon and climate change). In early February 2013, instructions on how to access the ORS will be sent to you by e-mail. If you are unable to respond via the ORS, please e-mail [response@cdproject.net](mailto:response@cdproject.net).

We encourage companies to consult the CDP Water Disclosure 2013 reporting guidance, (<https://www.cdproject.net/guidance>) and to use the guidance within the ORS. Please answer the questions as comprehensively as possible. Where you do not have all of the information requested please respond with what you have as this is more valuable to us than no responses.

Please note that the reporting period and the reporting boundary (i.e. the companies, entities or group) for which you will be providing data will be collected on a page of the ORS prior to the start of the CDP Water Disclosure 2013 information request.

### CDP Questionnaire License Fee:

The copyright to CDP's annual questionnaire is owned by Carbon Disclosure Project, a registered charity number 1122930 and a company limited by guarantee, registered in England number 05019650. Any use of any part of the questionnaire, including the questions, must be licensed by Carbon Disclosure Project. Any unauthorised use is prohibited and Carbon Disclosure Project reserves the right to protect its copyright by all legal means necessary.

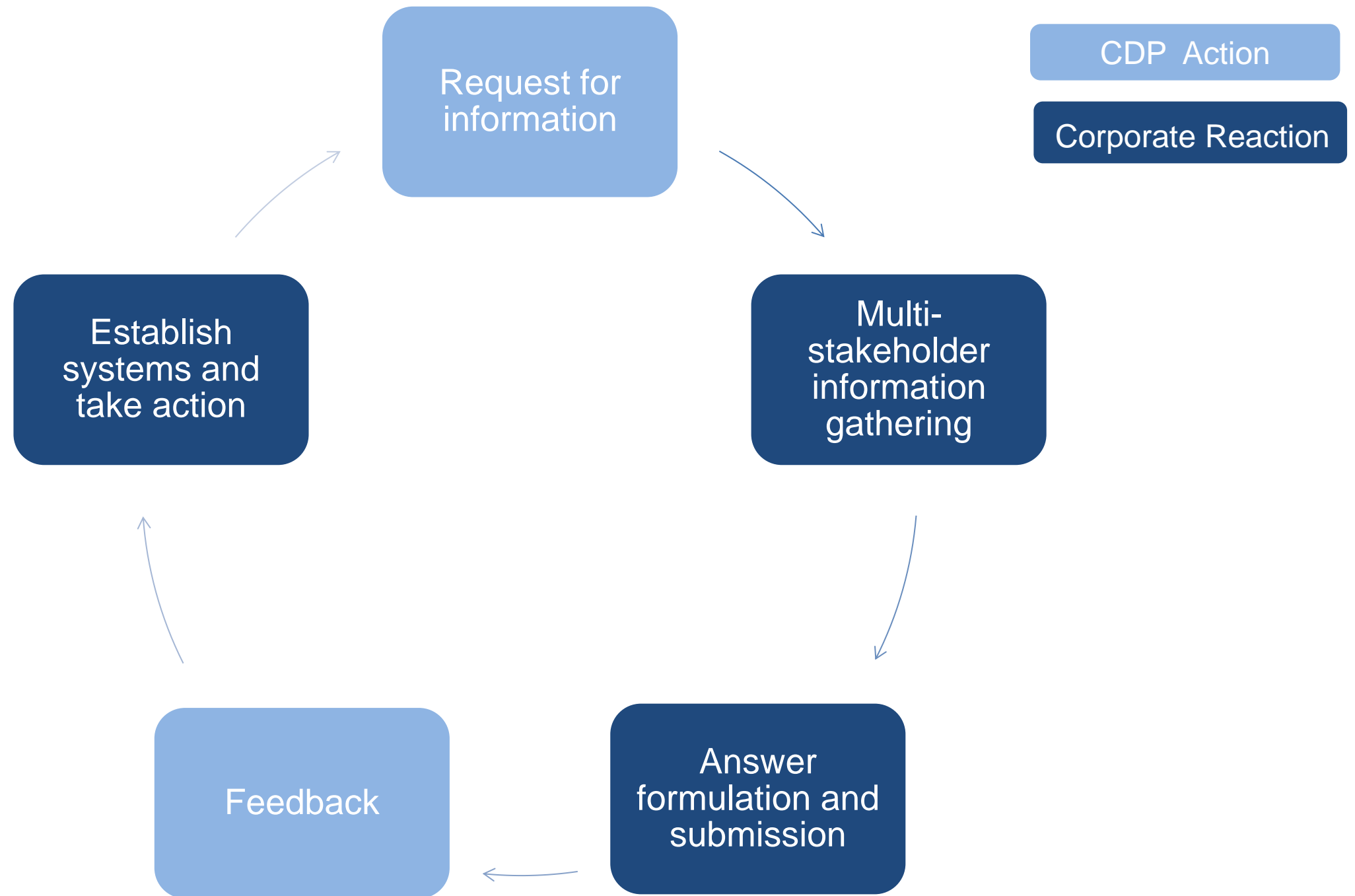
Contact [license@cdproject.net](mailto:license@cdproject.net) for details.

**NBIM**

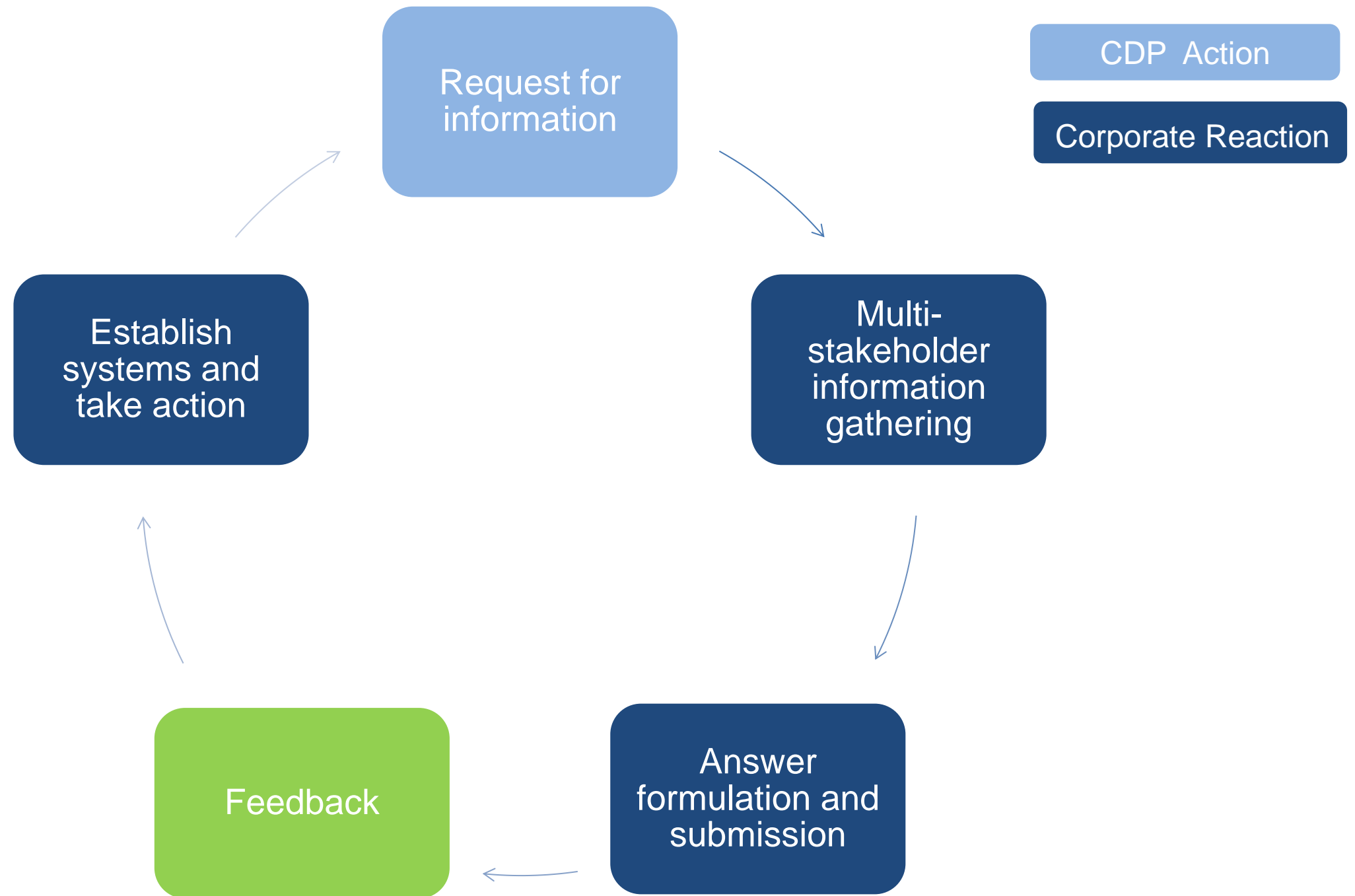
Norges Bank Investment Management

**Deloitte.**

# The CDP process



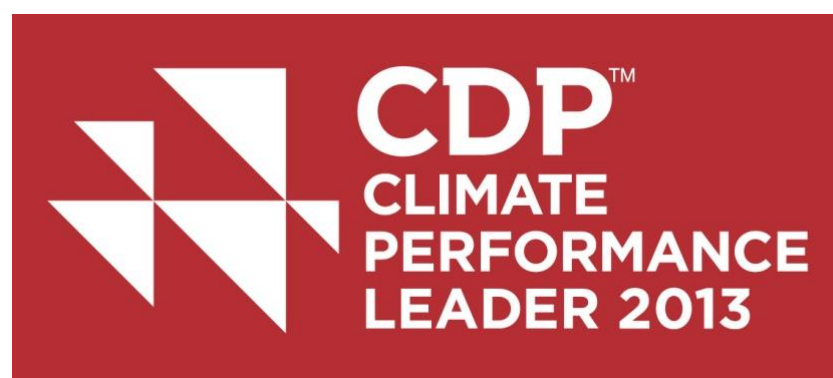
# The CDP process



---

## Leadership Indices

---



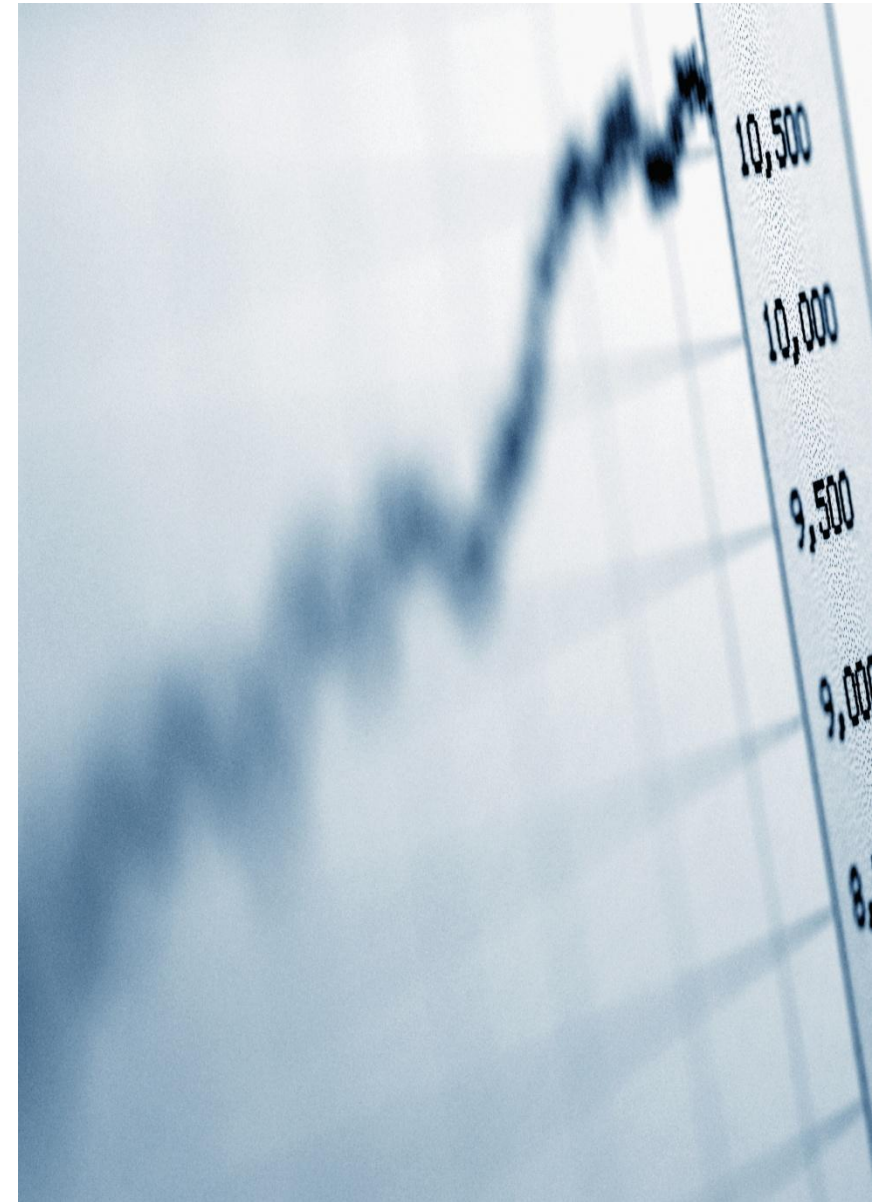


---

# Scoring

---

- ▼ Respondents want objective feedback
- ▼ Investors want simple benchmarking metrics and indicators
- ▼ CDP wants to separate the rhetoric from the reality to catalyse greater corporate water stewardship



# Questionnaire

- ▼ Is it scorable?
- ▼ Is it scalable?
- ▼ Can we reduce the reporting burden?
- ▼ Are we asking the right questions?

CDP Water Disclosure 2013 Information Request

## CDP Water Disclosure 2013 Information Request

The following set of questions form the CDP Water Disclosure 2013 information request. Companies are asked to answer these questions in the Online Response System (ORS) provided by CDP through their website. As such, this document is a representation of the request and whilst the questions will remain the same, the format may differ online particularly where drop down options and tables have been included for ease of responses. Guidance will be available from February 2013 which will include or set out all of the options available and provide screen shots of the ORS to aid companies in completing the request.

We request a reply to the following questions by 30 June 2013.

Please respond to the information request using our Online Response System (ORS). This is the same ORS as is used for the Investor CDP 2013 information request (on carbon and climate change). In early February 2013, instructions on how to access the ORS will be sent to you by e-mail. If you are unable to respond via the ORS, please e-mail [respond@cdproject.net](mailto:respond@cdproject.net).

We encourage companies to consult the CDP Water Disclosure 2013 reporting guidance, <http://www.cdproject.net/guidance/> and to use the guidance within the ORS. Please answer the questions as comprehensively as possible. Where you do not have all of the information requested please respond with what you have as this is more valuable to us than no response.

Please note that the reporting period and the reporting boundary (i.e. the companies, entities or group) for which you will be providing data will be collected on a page of the ORS prior to the start of the CDP Water Disclosure 2013 information request.

### CDP Questionnaire License Fee:

The copyright to CDP's annual questionnaire is owned by Carbon Disclosure Project, a registered charity number 1122550 and a company limited by guarantee, registered in England number 05010650. Any use of any part of the questionnaire, including the questions, must be licensed by Carbon Disclosure Project. Any unauthorized use is prohibited and Carbon Disclosure Project reserves the right to protect its copyright by all legal means necessary.

Contact [license@cdproject.net](mailto:license@cdproject.net) for details.

---

# Invitation to participate

---

## Public consultation

We are operating a transparent and collaborative development process and we want to hear your thoughts.

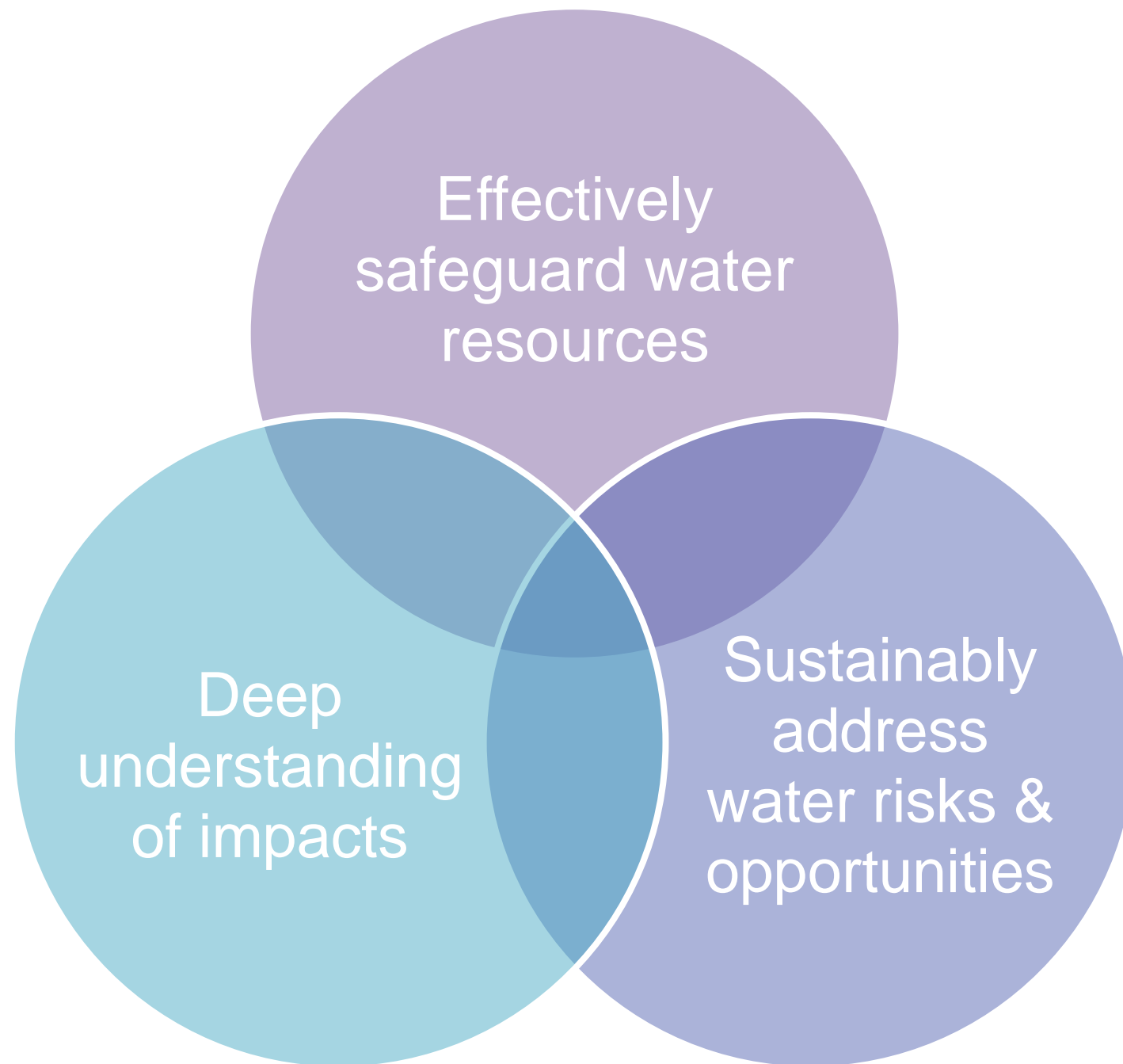
Download a copy of the new questionnaire and provide feedback on consultation pages of [www.cdp.net](http://www.cdp.net)



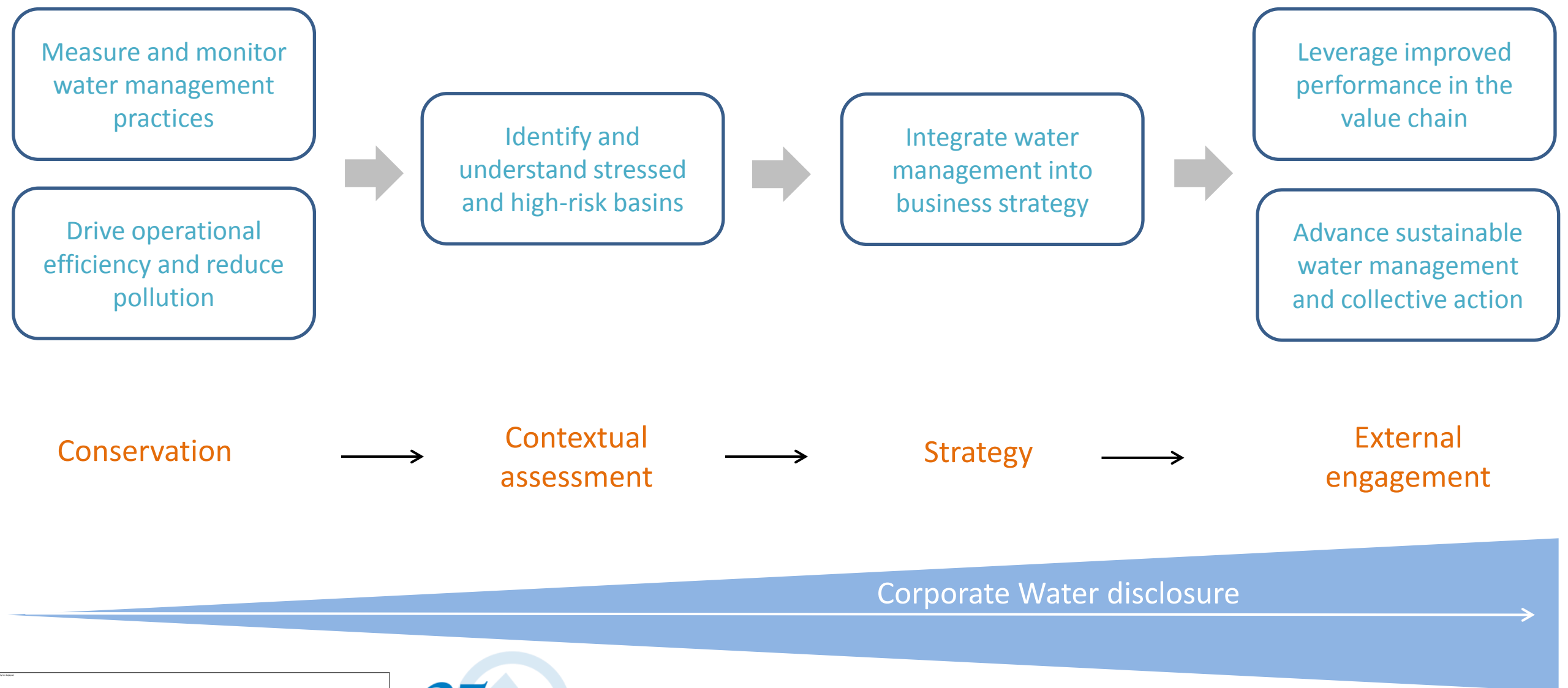
---

# Attributes of water stewards

---



# Our questions reflect the stewardship progression



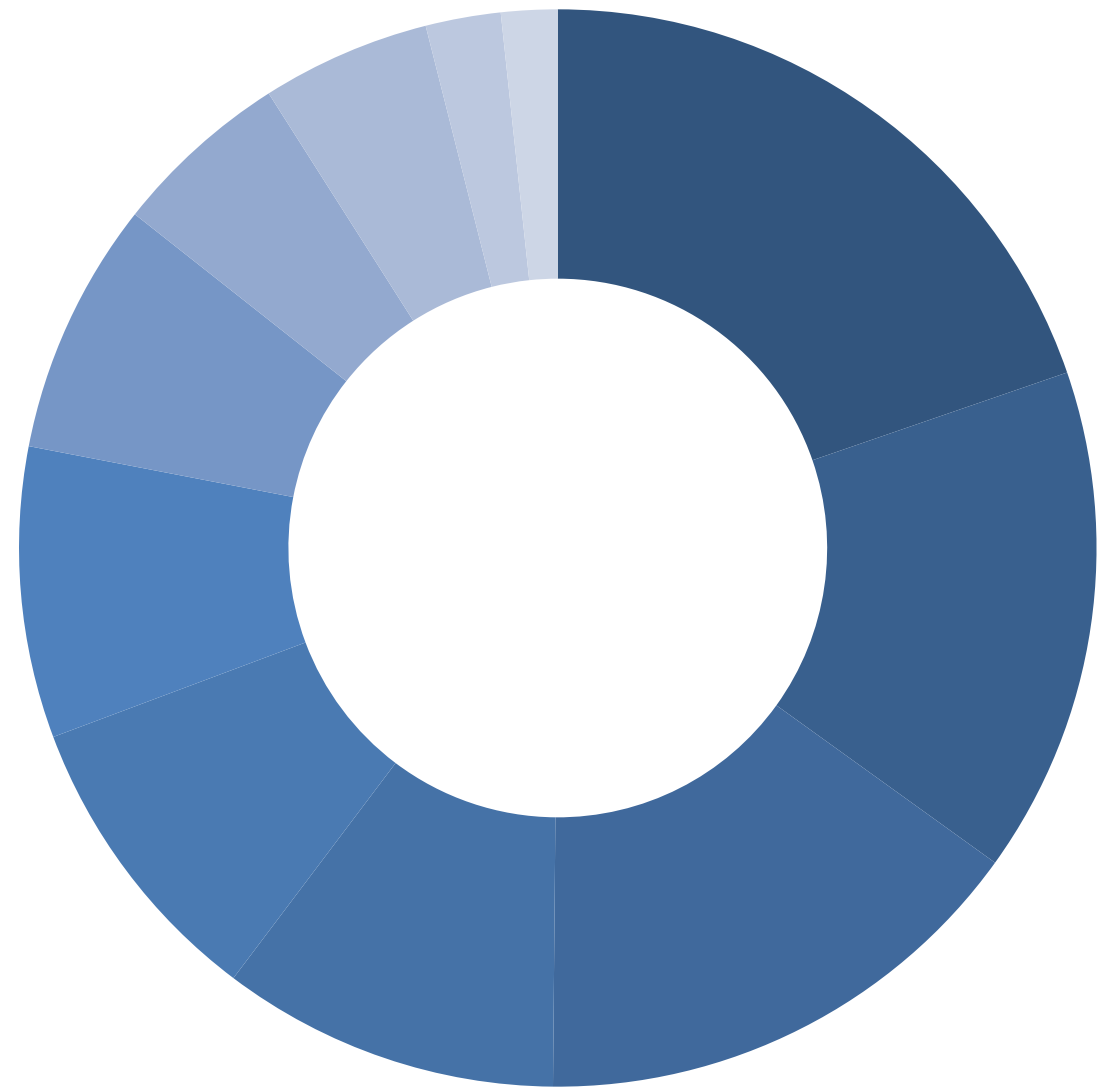
---

## 2 pillars of water scoring

---

### Disclosure score:

Reflects the completeness and the quality of the response, and hence its usefulness to data users





# Water scoring example

## Impacts

3.2 Are any habitats, water sources and / or other water users significantly impacted by your company’s withdrawal of water?

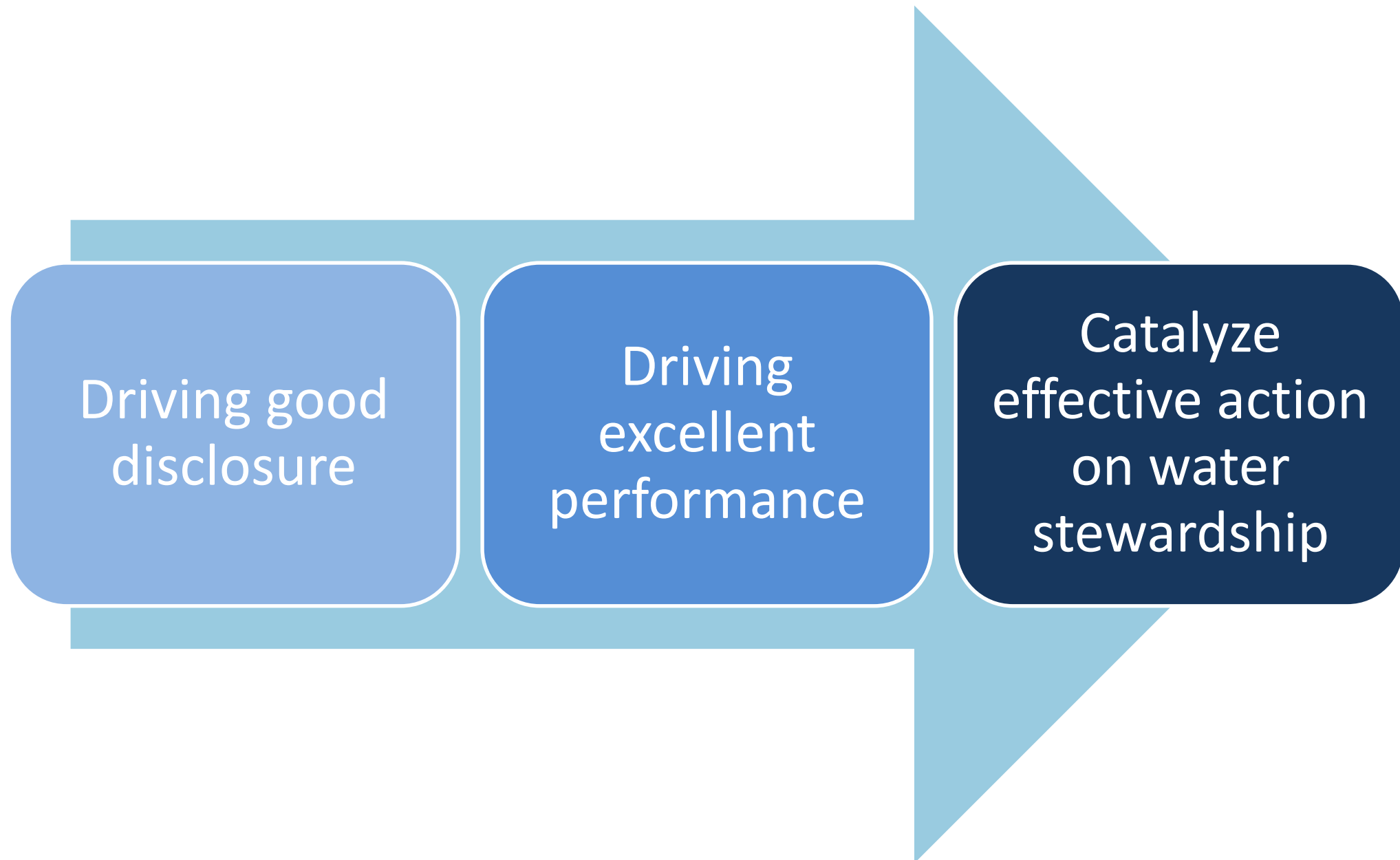
Country or region	River basin	What/who impacted	Impact	Remedial action and outcomes
Chile	Carlos Anwandter Sanctuary	Wetland	Industrial effluent discharged into this wetland of international importance	None

**Disclosure score :** Points for disclosing whether there is a target, and characterising that target (if applicable) . Mostly logic driven, some interpretation (companies often fill in wrong!)

---

# CDP is not just about disclosure

---



---

## 2 pillars of water scoring

---

### Disclosure score:

Reflects the completeness and the quality of the response, and hence its usefulness to data users

### Performance score:

Points are awarded for actions in the reporting year that contribute to water stewardship and transparency





# Water scoring example

## Impacts

3.2 Are any habitats, water sources and / or other water users significantly impacted by your company’s discharge of water?

Country or region	River basin	What/who impacted	Impact	Remedial action and outcomes
Chile	Carlos Anwandter Sanctuary	Wetland	Industrial effluent discharged into this wetland of international importance	None

**Disclosure score :** Points for disclosing details of the habitats, water sources and/or other water users significantly impacted.

**Performance score:** No points for impact, potential points for remedial action and outcome

---

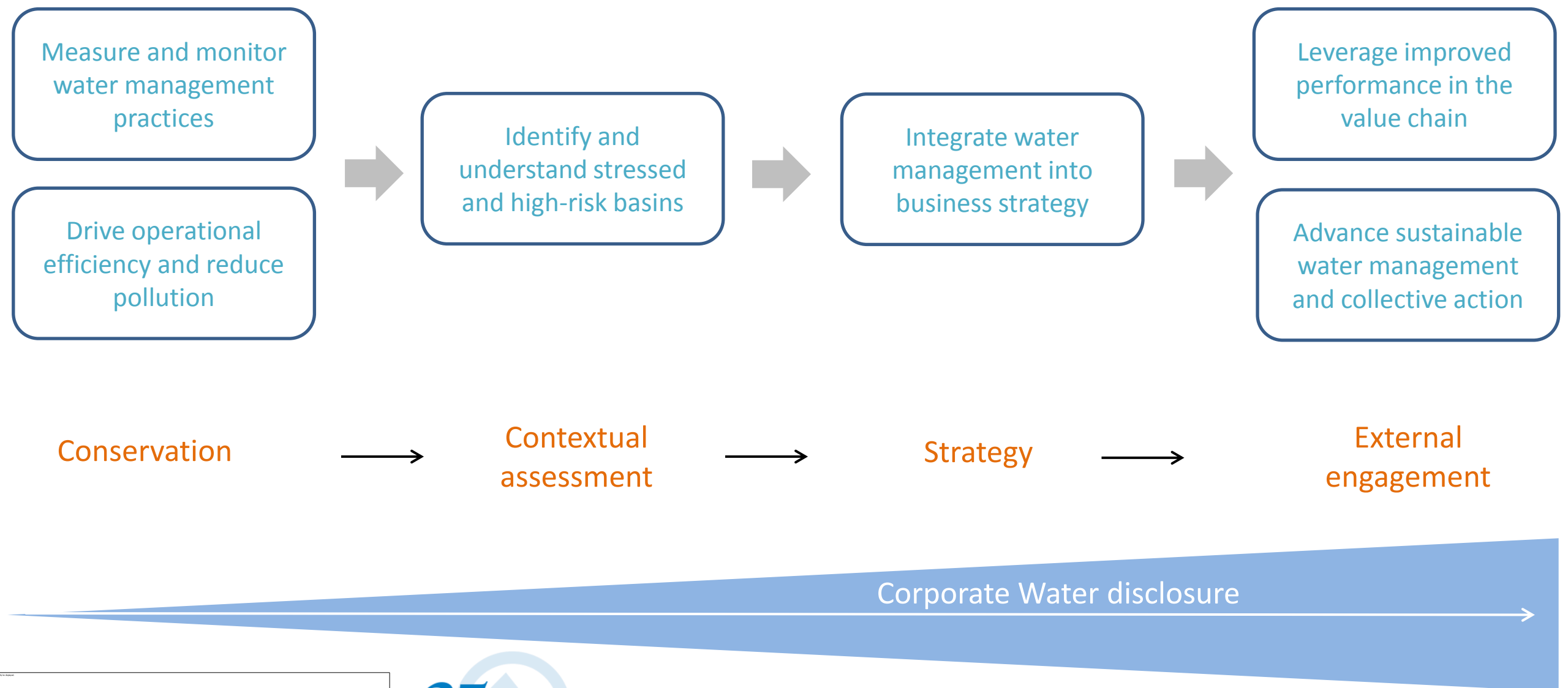
# Challenges

---

- ▼ No consensus amongst companies, investors, NGOs and regulators on what good water stewardship looks like
- ▼ Many different types of action that could constitute good water stewardship
- ▼ Efficacy of actions is very difficult to judge



# Our questions reflect the stewardship progression





---

# Consensus

---

- ▼ What differentiates water stewardship from water management?
- ▼ Does the proposed stewardship progression accurately capture the way corporate water efforts mature over time? How might it be amended?

